

Due date/discussion: 25.11.2011

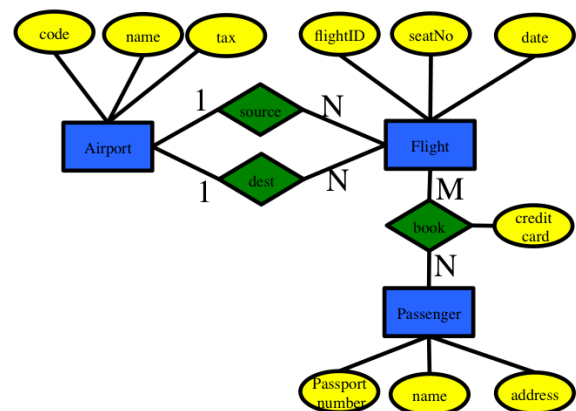
Exercise Sheet 4

XML Data Modelling, XML Schema (2)

Exercise 1: Comparison with Relational Databases

On the last exercise sheets, you have been asked to model a flight application in XML and provide an XML Schema. For your convenience, the problem description and partial E/R model are repeated here:

An international flight company operates flights between several airports. A passenger has a name, an address and a passport number. When a passenger books a ticket, the flight company registers a credit card number. A flight has an id, number of seats, and a date. Each airport is characterised by its name, code, and tax value in dollars. Create a software which is able to retrieve all reservations on a given date, the passengers flying through a certain airport on a given date [etc.]



- 3.1. Identify primary key constraints and express them using XML Schema.
- 3.2. Identify a M:N relationship in the E/R diagram. Express it using XML Schema.
- 3.3. Identify foreign key constraints and express them using XML Schema.
- 3.4. Which constraints can you express using a DTD instead of an XML Schema?

Exercise 2: Schema for Schemas (time consuming!)

Model the elements and constraints which are valid in XML Schema using an XML Schema.